

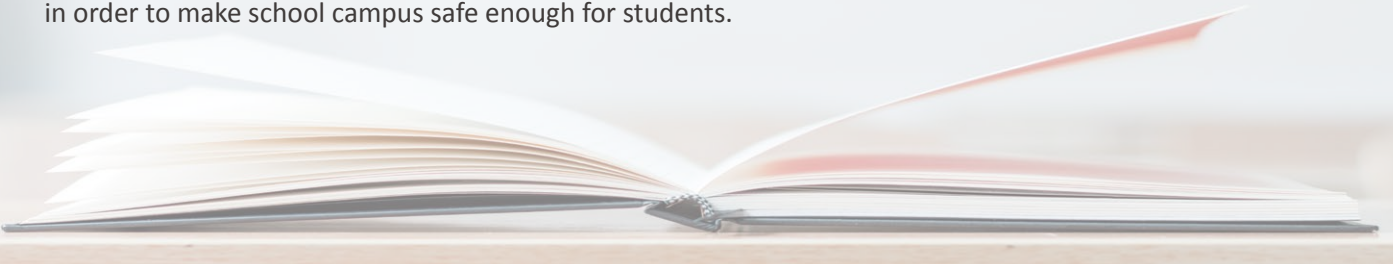
AI TECHNOLOGY ENSURES CAMPUS SAFETY

Dahua Campus Safety Management Solution



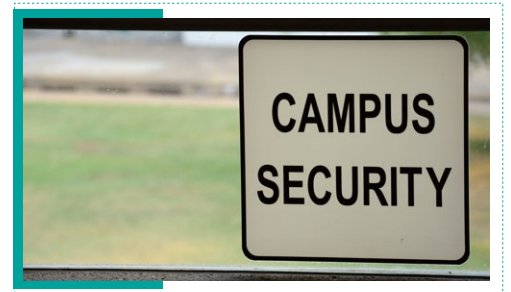
BACKGROUND

According to a recently published poll of college students, 86% of parents believe that the safety of the campus is an important factor in choosing a college. Safety even ranks higher than academic quality for parents. All colleges do their best to keep campus housing a safe place, but there are still a lot of challenges to overcome in order to make school campus safe enough for students.

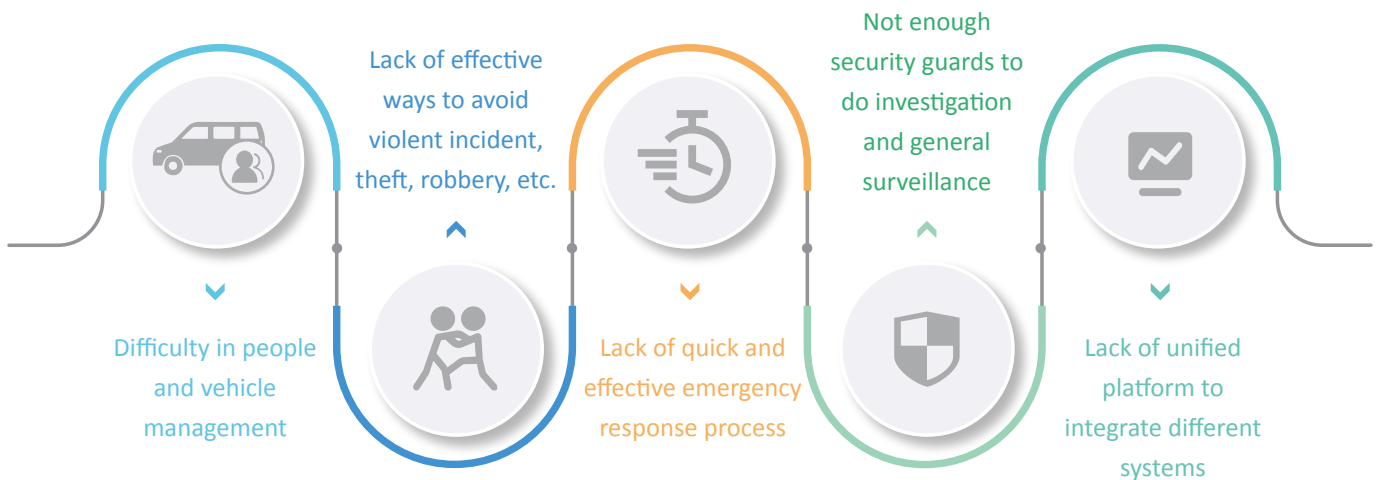


Colleges are required by the Higher Education Opportunity Act (HEOA) to keep campus crime statistics, which are compiled from campus security reports. These reports detail the types and number of crimes that occur on and around the campus as reported by campus police, resident advisors and other campus security officials.

In 2013, the Japanese National Assembly passed the Law on Promoting School Bullying Prevention Measures, which legalized the problem of school bullying for the first time. It clarified the definition of school bullying and established a complete system to deal with it.



• Key Challenges



SOLUTION OVERVIEW



People Management



Vehicle Management



Emergency Management



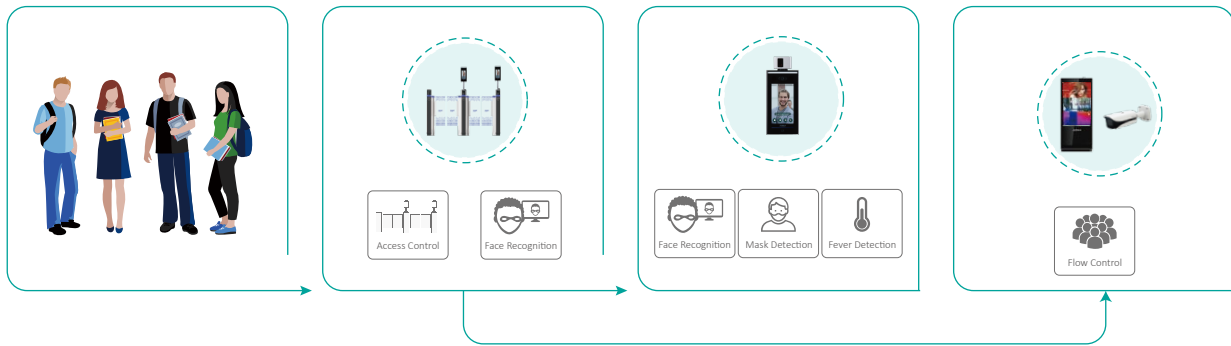
Canteen Management



Control Center Management

SOLUTION DESIGN

• People Management



Application Scenarios

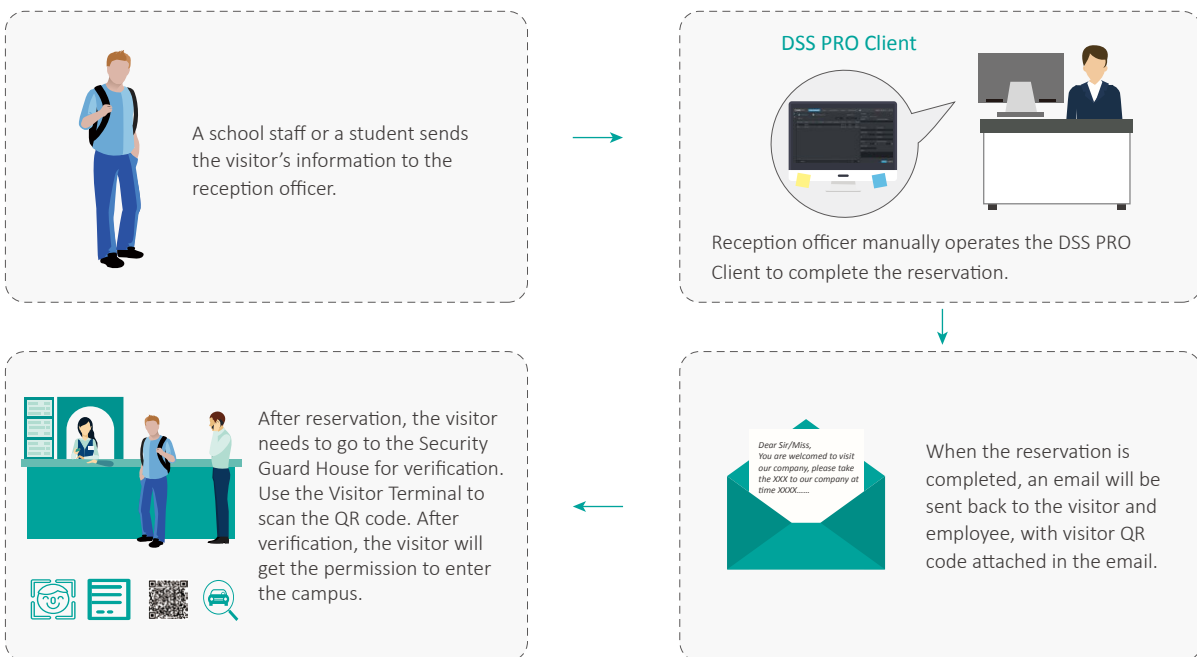
- Campus Entrance
- Apartment Entrance
- Library Entrance



Solution Value

- Adopts FR and access control for people management at the entrance with higher efficiency and security.
- Reduces the risk of cross-infection through the detection of face mask and temperature, flow control, etc.
- Manages the visitors' records with a robust system to enhance security and enable backtracking.

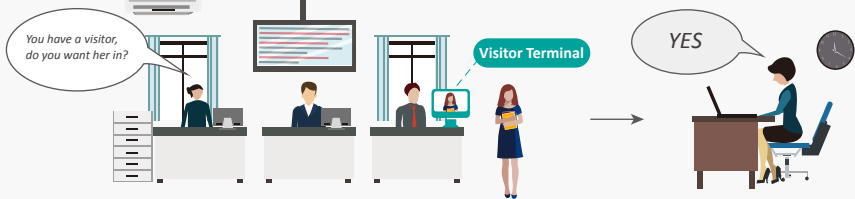
1 Reservation Visitor



2 Temporary Visitor

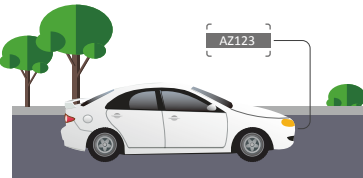


For temporary visitor without reservation, the visitor needs to register at the Security Guard House.



The security personnel will confirm the visitor's information with their contact person in the school. The visitor will need to fill-up the visitor information via the DSS PRO Client or Visitor Terminal. After confirmation, the visitor will get the permission to enter the campus.

• Vehicle Management



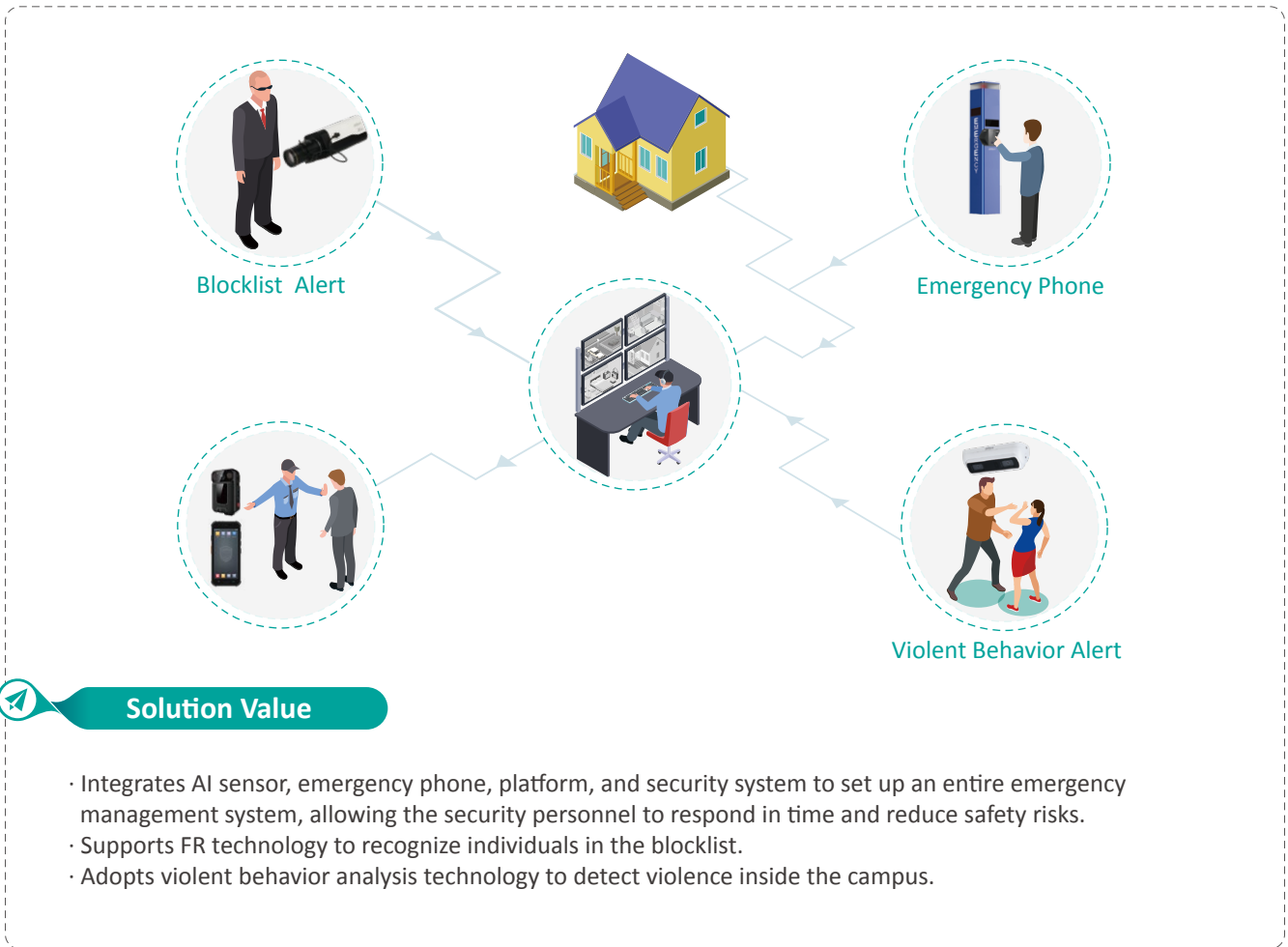
Application Scenarios

- Campus Entrance
- Campus Road

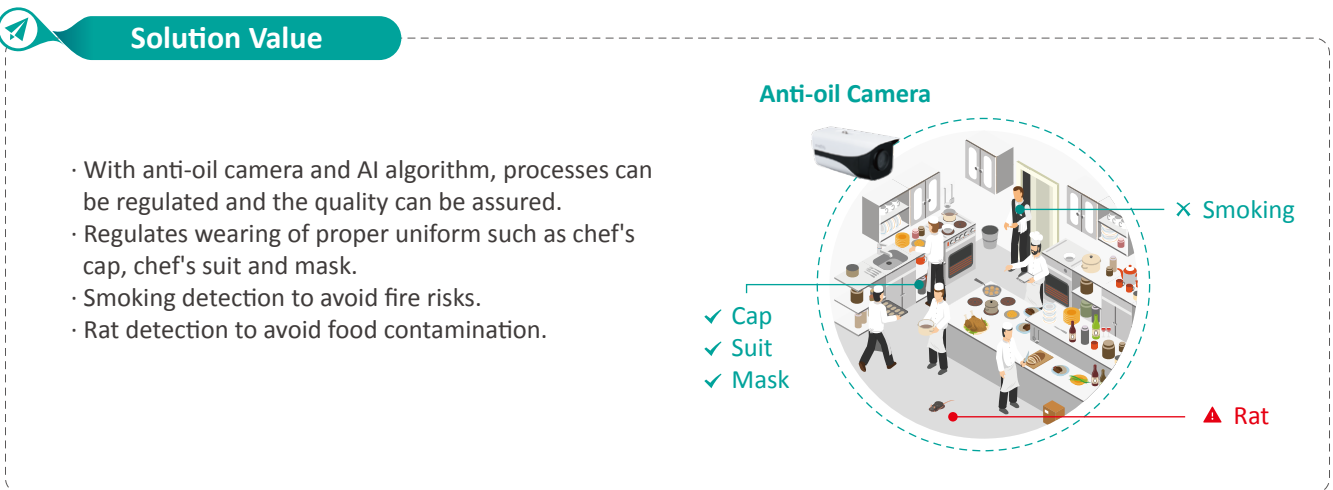
Solution Value

- Adopts ANPR and barrier gate for vehicle management at the entrance gate with higher efficiency.
- Detects illegal parking and over speeding, improving safety and regulating driving inside the campus.
- Provides visual reports of vehicles in the campus.

• Emergency Management



• Canteen Management



• Center Management/Perimeter



Application Scenarios



· Campus Perimeter



· Campus Lake/River

Video Perimeter

- Visible at day and night.
- Easy deployment.
- Filters animal, leaf, light, and other irrelevant objects, reducing 95% of false alarms.
- Provides active deterrence, with all-in-one installation.
- Offers target types (human and vehicle) to easily search targets from video recordings.



Thermal Perimeter

- Ignores interference caused by zero light, smog, rain, snow, and so on.



Radar Perimeter

- Provides long distance perimeter protection.
- Offers moving track display and PTZ camera real-time monitoring.



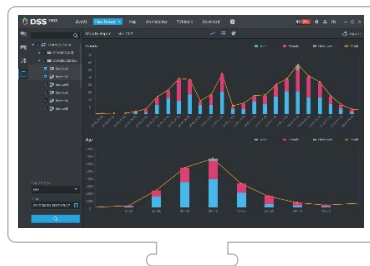
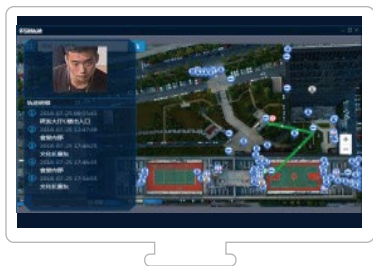
Center Management/AR Panorama

Solution Value

AR panoramic technology generates wide field of view through merging and splicing of panoramic images. The software overlaps the cameras as tags in the image. The corresponding camera video is displayed by clicking these tags, making surveillance visual and convenient, and improving the center's efficiency.



Center Management/Metadata Analysis



20+ Attributes

- Face: 6
- Human: 8
- Non-motor Vehicle: 6
- Motor Vehicle: 7

Human Face

- Gender
- Age
- Glasses
- Mouth Mask
- Expression
- Beard

Human Body

- Gender
- Top Color
- Top Type
- Bottom Color
- Bottom Type
- Hat
- Bag
- Umbrella

Non-motor Vehicle

- Vehicle Type
- Vehicle Color
- Cycling Number
- Top Color
- Top Type
- Hat

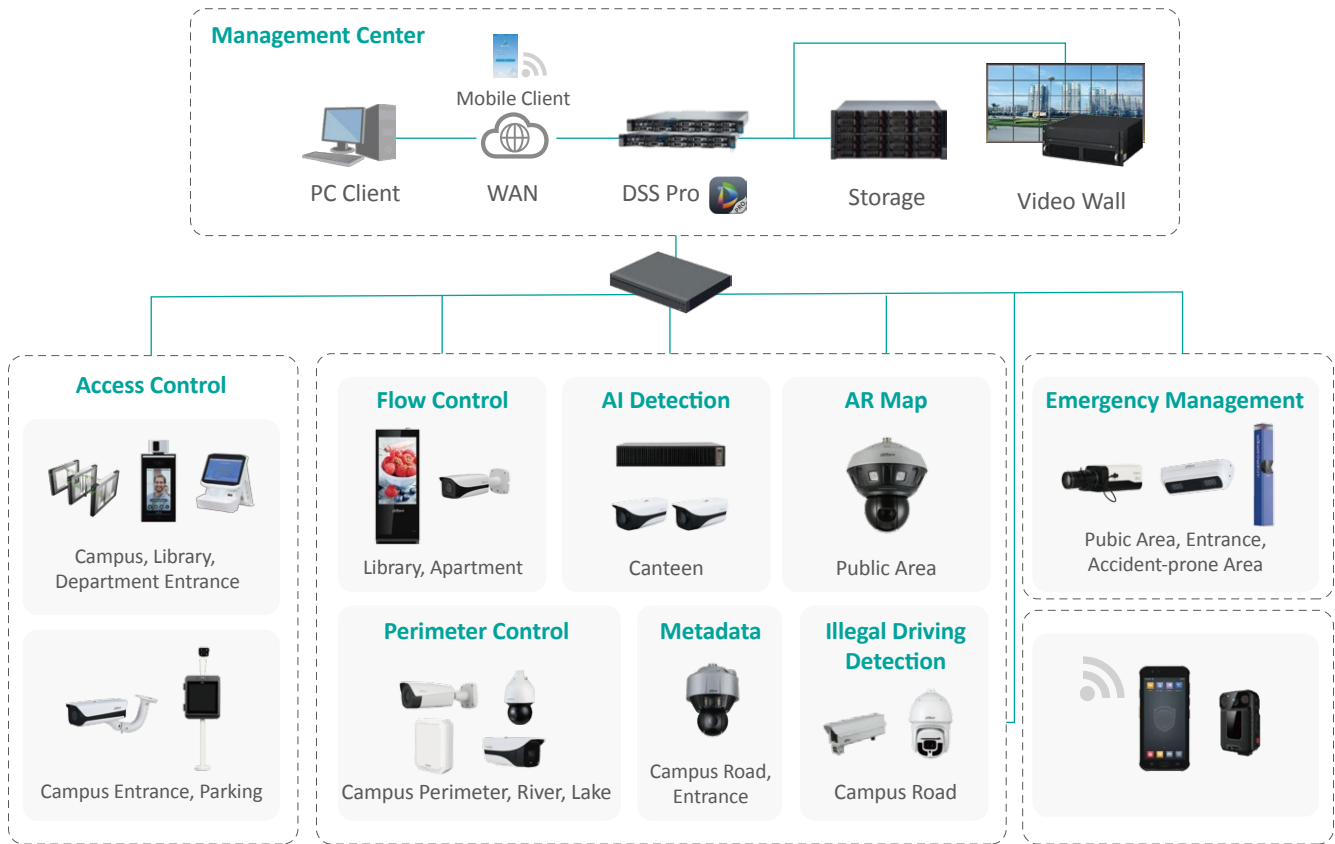
Vehicle

- Plate No.
- Plate Color
- Car Color
- Car Type
- Calling
- Seatbelt
- Smoke

Solution Value

- AI technology helps classify all objects, including person, motor vehicle, and non-motor vehicle.
- Allows tracking of human/vehicle targets if needed.
- Provides Big Data for further analysis.

SOLUTION ARCHITECTURE



Platform Highlight

Powerful

- Up to 2,000 channels, 1,000 doors and 200TB storage capacity per server, maximizing the hardware performance.

Scalable

- It can be easily expanded to up to 20,000 channels and 2PB storage capacity through the distributed system.
- You also can extend functions, traffic, and business intelligence via add-on modules.

High Availability

- Supports hot standby and N + M redundancy that enables the failover servers to serve as backup to primary recording and event servers.

Customizable

- Allows integration of other systems and devices via API, SDK and ONVIF.
- Meets customer's personalized needs and assists them in formulating their market competitive advantage.

-Software-





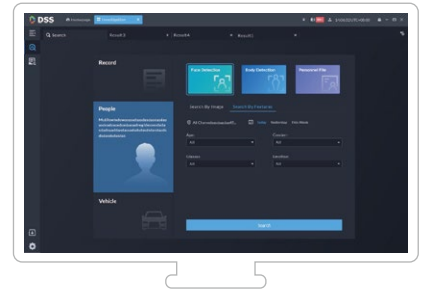
High Availability

DSS PRO provides real-time monitoring applications that integrate devices, maps, events and other multi-dimensional tools.



Event Center

DSS PRO offers alarm processing with panoramic application that integrates alarm, investigation, and other related processes.



DeepXplore

DSS PRO provides post-event videos and images that can be used as evidence for further investigation.

Key Products

ASI7213X-V1-T1
Face Recognition Access Controller



- 7-inch LCD display with 1024 × 600 resolution
- 2MP CMOS, WDR
- Can hold 100,000 users, 100,000 face images, 100,000 cards, 100,000 password, 50 administrators, and 300,000 records
- Face-camera distance: 0.3 m–2.0 m; human height: 0.9 m–2.4 m (lens-ground distance: 1.4 m)
- Face recognition speed: 0.2s/person

DHI-ASV1001A
10 Inch Dual Screens
Visitor Terminal



- Dual screen 10-inch display
- 2M CMOS camera, supports 0 to 180-degree adjustment
- USB port, dual Ethernet port supported

ASI7213X-V1-T1
3MP WizMind Dual-Lens
Network Camera



- 3MP, 1/2.8" CMOS image sensor, low illuminance, high image definition
- Outputs max. 3MP (2048 × 1536) @30fps
- ROI, SMART H.264+/H.265+, flexible coding, applicable to various bandwidth and storage environments
- Stereo analysis: Fall detection, people approaching detection, number of people error stay detection, and violence detection

VTA8111A/AB
Emergency Phone Tower



- HD CMOS camera
- Night vision
- Video & audio talk
- Remote monitoring and broadcasting
- Alarm integration
- Vandal proof, IP65, IK10

IPC-HFW5541T-AS-PV

5MP WDR IR Bullet
WizMind Network Camera



- 1/2.7" 5Megapixel progressive scan CMOS
- ROI, SMART H.264+/H.265+, flexible coding, applicable to various bandwidth and storage environments
- 20 fps @2592 × 1944, 50/60 fps @1080P (1920 × 1080)

IPC-HFW3441M-AS-SFC-I2

4MP Anti-oil IR Fixed-focal
Bullet WizSense Network Camera



- 4MP, 1/3" CMOS image sensor, low illuminance, high image definition
- Outputs max. 4MP (2688 × 1520) @30fps
- H.265 codec, high compression rate, low bit rate
- Built-in IR LED, max. IR distance: 50 m
- Anti-oil feature on front glass allows quick detachment for washing

PSDW81642ML-A360-D237

8x2MP Multi-Sensor Panoramic +
PTZ WizMind Network Camera



- Panoramic: Eight 1/1.8" 2 Megapixel progressive scan CMOS
- PTZ: One 1/1.8" 2 Megapixel progressive scan CMOS
- Supports 360-degree panoramic view
- Starlight+ technology, IR distance up to 220 m
- Smart tracking

SDT5X405-4F-WA

4MP Starlight+ IR WizMind
Network Dual-PTZ Camera



- Dual-PTZ system
- 1/1.8" 4Megapixel CMOS
- Powerful 5x optical zoom
- Starlight+ technology
- Max. 25/30fps @4M
- Auto tracking and perimeter protection based on deep learning

IPC-HF7442F-FR

4MP BOX WizMind
Network Camera



- 4MP, 1/1.8" CMOS image sensor, low illuminance, high image definition
- Max outputs 4MP (2688×1520) @50fps/60fps
- H.264&H.265 coding, high compression ration
- Wide dynamic, day/night, 3D NR, AWB, HLC, BLC
- ROI, SVC, SMART H.264+/H.265+, flexible coding, applicable to various bandwidth and storage environments
- With deep learning algorithm, it supports people counting, face recognition, perimeter protection, etc.

MPT320

Mobile Portable Terminal



- Android 9.0
- 8-core 1.8 GHz
- 4 GB RAM + 64 GB ROM
- Main camera: 16MP; Front camera: 8MP
- H.265 and H.264 video compression
- Supports TF card up to 256 GB
- Fingerprint recognition
- 2G/3G/4G, Wi-Fi, Bluetooth, NFC, GPS/GLONASS/BeiDou Positioning
- 2W speaker
- 4600mAh battery, 4.35V

IPMECS-2201C-(IR)

Access ANPR Kit

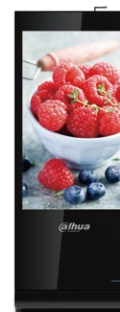
- Adopts high-performance CMOS image sensor and processor for in-depth extraction and analysis of vehicle information 24/7.
- Embraces deep learning algorithm for accurate recognition of vehicles without license plate, and vehicle model, vehicle logo, vehicle series, vehicle color, and more.
- Single network port and integration of ANPR camera, LED illuminators, and LED display facilitate installation and deployment.
- Information shown on the LED display can be customized.
- Supports two-way audio and voice broadcasting, which is ideal for unmanned parking solution.



LDV55-SAI200

55" Floor Standing Digital Signage

- High quality panel, industrial-grade design, full metal casing, 5mm tempered protective glass.
- Supports picture, audio, video, PDF, IPC stream, time, weather, etc.
- MPS platform provides unified remote management for system integrators and media operators.
- Strong 4 core processor provides powerful decoding capabilities, enabling premium display performance.
- Built-in media player software and USB player provide multiple methods to play contents.



SUCCESS CASES

- An Education Bureau in the Philippines



👁 Project Background

Due to the pandemic, most students must attend remote online classes, with some permitted to attend in-person classes in their school. In order to ensure the safety of students in their school, the client deployed a centralized solution for 34 schools in the area under its jurisdiction, including school entrance and exit management, people management, human body temperature detection, etc.

🚀 Project Highlights

- **Centralized Management for Multiple Schools**

The Education Bureau conducts unified management of school personnel, temperature measurement, and time attendance through the platform, improving the management efficiency of several schools in its jurisdiction.

- **Face Recognition and Precise Temperature Detection**

Face recognition access control devices were deployed in key areas, allowing all teachers and students to enjoy touchless passage via FR.

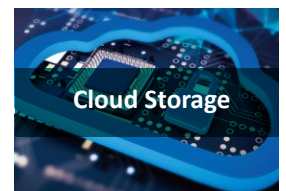
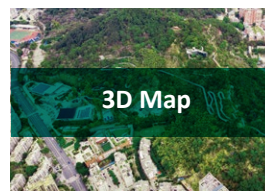
- A Conservatory School in Zhejiang, China



Project Background

The conservatory school is located in Hangzhou, covering an area of 2,428,114m². In 2018, it deployed the Dahua Smart Campus Solution in its campus. The project consists of Dahua HD intelligent cameras, with panoramic tracking camera deployed at vantage point, and speed detection camera and emergency phone installed at the main road. It integrates face recognition, ANPR, cloud storage and 3D map to realize a unified management of people, vehicles and other objects in the campus. The LCD splicing screen is also installed in the monitoring center to realize image splicing, roaming, split screen, alarm notification, emergency response and other functions.

Project Highlights



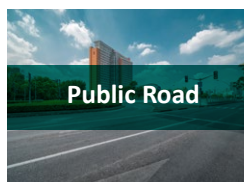
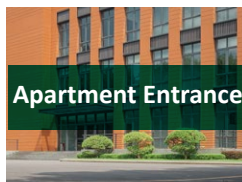
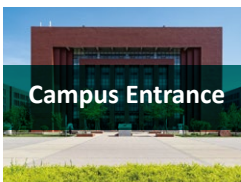
- A University in Nanjing, China



👁 Project Background

The client, a university in Nanjing, is a national-level university. This project is deployed in their new campus located in Tianmu Lake where the campus has a construction area of about 5,300,000 m². The core aspects of the project is realizing the infrastructure of a smart campus, and collecting big data through face recognition, metadata, smart apartment, AI classroom, etc. The project gradually implements planning and construction of the campus big data platform, providing omni-directional service for campus management, teaching and living.

🚀 Project Highlights



ENABLING A SAFER SOCIETY AND SMARTER LIVING

Dahua USA

Tel: +1 (949) 679-7777
Email: sales.usa@dahuatech.com
support.usa@dahuatech.com

Dahua Mexico

Tel: +52 55 67231936
Email: sales.mx@dahuatech.com
support.mx@dahuatech.com

Dahua Colombia

Tel: +571 7446110
Email: sales.co@dahuatech.com
support.co@dahuatech.com

Dahua Brazil

Tel: +55 11 32511871
Vendas: comercial.br@dahuatech.com
Suporte Técnico: suporte.br@dahuatech.com

Dahua Perú

Tel: +511 500-8555
Email: sales.pe@dahuatech.com
support.pe@dahuatech.com

Dahua Chile

Tel: +56 232705421
Email: sales.cl@dahuatech.com
support.chile@dahuatech.com

Dahua Argentina

Email: project.ar@dahuatech.com

Dahua Panama

Email: sales.pa@dahuatech.com
Support: support.pa@dahuatech.com

Dahua Thailand

Tel: +66 2541 5188
Email: info.th@dahuatech.com
hr.th@dahuatech.com

Dahua Singapore

Tel: +65 65380952
Email: sales.sg@dahuatech.com

Dahua Turkey

Email: sales.tr@dahuatech.com
support.tr@dahuatech.com

Dahua Malaysia

Tel: +60376620731
Email: sales.my@dahuatech.com

Dahua Indonesia

Tel: +62 811 867 7728
Email: sales.indo@dahuatech.com

Dahua S.Korea

Tel: +82 7081618889
Email: sales.kr@dahuatech.com
support.kr@dahuatech.com

Dahua India

Tel: +91 1244569100
Email: sales.india@dahuatech.com

Dahua Russia

Tel: 8 (499) 682-60-00
Email: info@dahuatech.com

Dahua Kazakhstan

Tel: +7 727 3110838
Email: sales.kz@dahuatech.com

Dahua VISION LLC

Tel: +998 (78) 1488666
E-mail: dh_uzbekistan@dahuatech.com

Dahua UK

Tel: +44(0)1628 613 500
Email: sales.uk@dahuatech.com

Dahua the Netherlands

Tel: +31 (0) 79 799 96 96
Email: sales.benelux@dahuatech.com

Dahua Iberia

Tel: +34 917649862
Email: sales.iberia@dahuatech.com

Dahua Italy

Tel: +39 362182681
Email: sales.italy@dahuatech.com

Dahua Germany

Tel: +49 211 20544121
Email: sales.de@dahuatech.com

Dahua France

+33 1 48 53 70 53
Email: sales.france@dahuatech.com

Dahua CEE & Nordic

Tel: +48 223957400
Email: dh.cen@dahuatech.com

Dahua Poland

Tel: +48 223957400
Email: biuro.pl@dahuatech.com

Dahua SRB

+38 1 (11) 4429999
Email: dh.srb@dahuatech.com

Dahua Denmark

Email: Nordic.ne@dahuatech.com

Dahua Hungary

Tel: +36 17899852
Email: sales.hu@dahuatech.com

Dahua Bulgaria

Tel: +35929950013
Email: support.bg@dahuatech.com

Dahua SRL

Email: marketing.ro@dahuatech.com

Dahua Czech

Tel: +420 225 986 001
Email: admin.cz@dahuatech.com

Dahua S. Africa

Email: sales.za@dahuatech.com

Dahua Australia

Tel: +61 299285200
Email: sales.oc@dahuatech.com

Dahua Middle East

Tel: +971 48815300
Email: sales.me@dahuatech.com
info.me@dahuatech.com

* Design and specifications are subject to change without notice.

Ver. 1, Jun. 2021

DAHUA TECHNOLOGY

No.1199 Bin'an Road, Binjiang District, Hangzhou, China. 310053
Tel: +86-571-87688883 Fax: +86-571-87688815
Email: overseas@dahuatech.com
www.dahuasecurity.com

